
Chasing the Line Movie, Charitable Ski Events - and more!

Sun, Feb 12, 2023 at 8:13 PM



Northwest Ski Club Council

PLEASE SHARE THIS INFORMATION WITH YOUR CLUB MEMBERS!

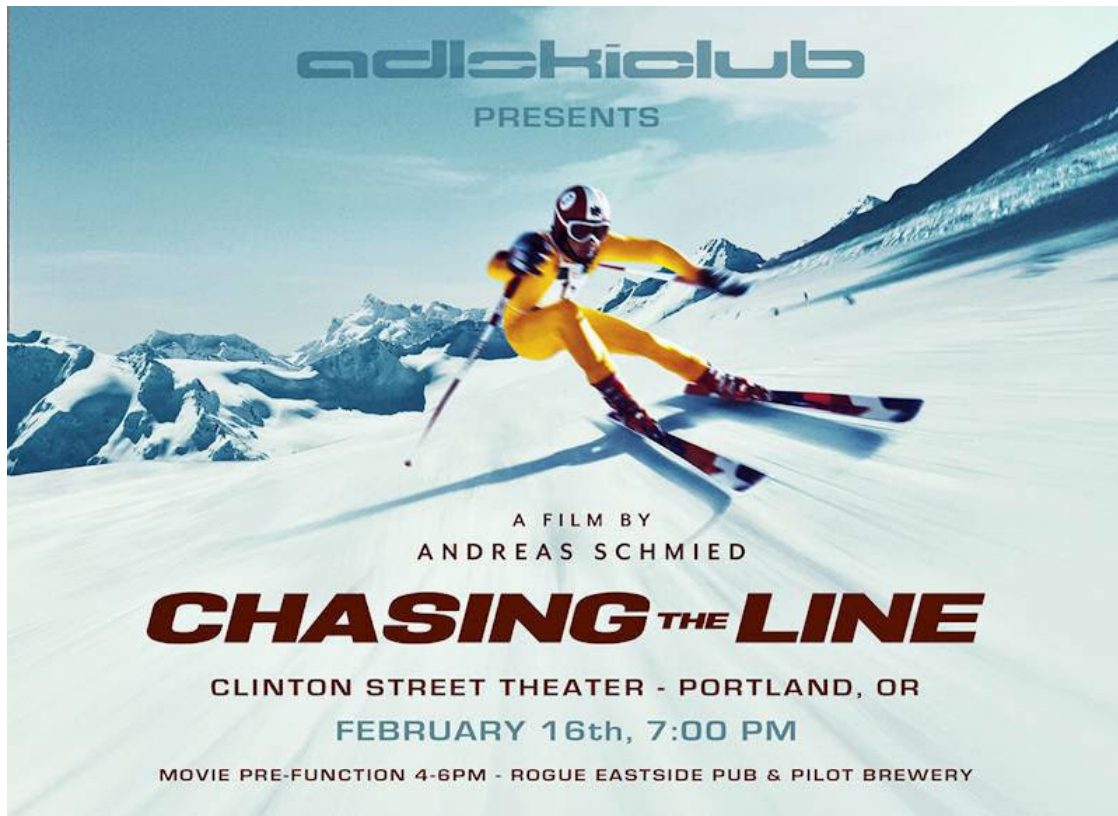
URGENT NOTICE! NWSCC still has **two Indy Passes** available for purchase at a huge discount! Current value is \$369, but we will now sell them for \$150 each, or the best offer received by Wednesday, February 15, at 8:00 pm! Good at 120+ ski areas, each of these passes is good for two midweek days at Mt. Hood Meadows, as well as other Northwest ski areas. For example, Mountain High Snowsport Club has planned upcoming driving trips to ski Brundage and Tamarack, as well as to Mt. Shasta and Mt. Ashland, all on the Pass. (Check with Mountain High (trips@ mthigh.org) if you are interested in participating in these trips.) **Contact NWSCC President Chris Ciardi at president@ nwskiers.org to purchase - the best offer(s) by February 15 at 8:00 pm get(s) the pass(es)!** They will be sold together or individually!

Chasing the Line

**A movie about Franz Klammer
One day only at the Clinton Street Theater
Portland, OR, Thursday, Feb. 16, at 7 pm**

Check out this unique movie, "**Chasing the Line**", that will be shown in Portland, at the Clinton Street Theater only once, on **Thursday, Feb.**

16, 2023, at 7 pm. It's a movie about Franz Klammer, one of the best skiers in the 1970s.



Summary: It's 1976 and this is the story of Franz Klammer, "The Kaiser" and the most famous downhill race in the history of the sport. Barely 22, Franz Klammer finds himself at the "eye of the storm" when he shows up for the men's downhill competition at the 1976 Winter Olympic Games. It was the most watched ski race in the history of the sport with over 25 million watching on ABC in the United States alone. In Austria it was a national holiday and all eyes were glued to the TV.

Since the previous season the charismatic newcomer has won virtually every race. The pressure from the media and the public and the hopes of an entire nation are off the scales. His sponsor is pushing him to switch equipment right before the competition, the weather is getting steadily worse, and his toughest rivals know that Franz has to do better than just a flawless run. Franz senses that he has to find his own path and that only the love of his life can give him the strength to do that. This is the most important race of his life in which he skis a line that nobody even thought was possible, which made him a legend of the sport, to this day.

Chasing The Line Tickets On Sale Now

Franz Klammer is Chasing The Line - February 16th, at 7 pm, at the Clinton Street Theater

Get your tickets now before it sells out

For movie information and tickets visit: www.chasingtheline.com

Buy your tickets here: https://store.adlskiclub.com/collections/chasing-the-line/products/chasing-the-line?mc_cid=77e75016ad&mc_eid=45057d4736

Chasing the Line Pre-Function Party

Come join the ADL Ski Club and PACRAT Racing League at the Rogue

UPCOMING CHARITY SKI EVENTS NEED YOUR SUPPORT!!

March 4: Ski to Defeat ALS is a one-day fundraising event designed to bring our ALS community together, while accommodating every ski and snow enthusiast, no matter their skill level. Please join us by registering and participating in a day full of meaningful fun at Mt. Hood Meadows. This is an event for the whole family. Participants may do one run or fifty runs. In addition, because of our partnership with Oregon Adaptive Sports, individuals with ALS are encouraged to participate! Proceeds benefit the ALS Association Oregon and SW Washington Chapter. Signup information [HERE](#).



March 4: Ski the Glade Trail Day, Timberline to Government Camp.

Join the fun and be treated to a continental breakfast, shuttles to Timberline all day, guide, gourmet lunch, Ski Patrol services, and Apres ski wine party. Timberline Lodge, an event sponsor, grooms the Glade Trail prior to the event to ensure there's great terrain for all participants. Participants are encouraged to wear vintage ski clothing for a chance at additional prizes. Ticket Prices: \$185 members, \$195 non-members. (Can purchase membership first.) Children 12 and younger \$125 with a family membership. Only 75 tickets will be sold, so call the Museum at 503-272-3301 to purchase your tickets! Tickets must be purchased in advance and sell out. Further information [HERE](#).



March 12-13: Oregon Cancer Ski Out, Mt. Hood Meadows and Best Western Plus Hood River. The 35th Annual [Oregon Cancer Ski Out](#) is a great event for skiers and snowboarders that combines fun, competition and fundraising with a unique racing format designed to let even novice skiers and rider participate in the fight against cancer. Teams of five compete for prizes in a race that rewards consistency and teamwork rather than individual speed. Prizes go to the top three teams. Volunteer celebrity and professional coaching staff (including Phil and Steve Mahre!) are on hand throughout the race, coordinating teams and assisting with professional advice and instructions. Participants raise money for Bucks to Buck Cancer, a peer-to-peer campaign. Information on registering, donating, or sponsorships [HERE](#).



March 18: 6th Annual Ski For All, Oregon Adaptive Sports, at Mt. Bachelor: This event is truly a rite of passage, designed to challenge even the world's greatest and most fun loving skiers and riders to see who can truly have the BEST DAY EVER on snow! Join us and score as many points as possible by attempting a variety of fun and inclusive challenges on the mountain. Prizes will be awarded to the top three participants in youth, teen, adult and masters (inclusive of ability and gender). Learn more and register [HERE](#).



Sign up now for the Bachelor Blast, April 6-7-8-9, 2023. See Flier below and on NWSCC Trips page. For signup form, click [HERE](#).



NWSCC - Northwest Ski Club Council - Presents

THE BACHELOR BLAST

April 7-9++, 2023 - ONLY \$320 per person (or less)



La Quinta by Wyndham Bend, 61200 S. Hwy. 97, Bend, OR
10 minutes to Downtown Bend
35-40 minutes to Mt. Bachelor

2 Nights lodging at La Quinta by Wyndham Bend
All rooms include free parking, deluxe hot continental breakfast,
high speed internet, fitness center, indoor swimming pool (salt water)
Non-smoking hotel, pet friendly

Price is Per Person/Double Occupancy - Choice of Double Queen or King Room
Includes 2 Consecutive Day Lift Pass to Mt. Bachelor (Saturday-Sunday)
Adult trip cost drops to \$290 with Friday-Saturday lifts
Sign up with your roommate of choice or pay a single supplement of \$130 -
we will not assign roommates for this trip.

THINK IT COULDN'T GET ANY BETTER? READ ON ...

SENIORS 65-69 AND TEENS 13-18 PAY ONLY \$250-\$275!!

SUPER SENIORS 70+ AND YOUTHS 6-12 PAY ONLY \$220-\$245!!

NO LIFTS NEEDED or NON SKIERS PAY ONLY \$150!!

Come early or stay late! Great prices available for room add-ons to either end of the trip

Contact trip captain re additional nights priced *per room* (not per person);

Lift tickets would change to 3 consecutive days

Contact trip captain about pricing for Nordic skiers

SPACE LIMITED AND ROOMS MAY SELL OUT AT MOTEL
SIGN UP EARLY TO GUARANTEE THE ROOM OF YOUR CHOICE!!



Sign Up & Pay By March 1, 2023 / Form is on reverse side or on NWSCC Website

Questions?? - Contact: Linda McGavin at editor@nwski.org / www.nwski.org

Where #Vanlife Meets #Skibum

In the Pacific Northwest, ski resorts set aside spots in their parking lots for vans and R.V.s, creating overnight communities of skiers and riders. One writer toured three Oregon resorts to test the scene. Read the article [HERE](#).

PROTECT OREGON RECREATION!

This issue impacts all of us who recreate in Oregon!

Recent court rulings have effectively nullified Oregon liability waivers, impacting the accessibility and affordability of recreation and fitness for people across our state. This is not just about ski resorts. Every recreation and fitness provider in the state is impacted. Oregon recreation needs your support!

NWSCC INDUSTRY MEMBER NEWS

MT. BACHELOR www.mtbachelor.com

Mt. Bachelor is open! Be sure to check our [Mountain Report](#), [Mt. Bachelor Mobile App](#), and our [Social Media](#) for the inside scoop on operations and updates.

Pick and choose 4 days on the mountain this season! Grab the [Unrestricted 4-Day Pass](#) if you plan to ski during the Holidays, or choose the [Restricted 4-Day Pass](#) for even bigger savings with holiday blackout dates.

Between our expert staff and dynamic fleet of skis, snowboards, and boots — you can be confident that we'll set you up with the best equipment for your experience level. Single-day, multi-day, and season-long rentals are available. Click [HERE](#) for details.

Full season passes (alpine and nordic), midweek passes, and 4-day restricted or unrestricted passes are currently available - click [HERE](#). The Outplay 365 Year Round Pass is only available in spring and early summer, so if you want one, watch for next year's offering!

Stop by [Gravity Sports Pro Shop](#) at Mt. Bachelor to pick up the latest outerwear, skis, boards, boots, bindings, and accessories. From beanies and base layers to Mt. Bachelor YETI cups and ornaments, the shop is stocked up with the perfect holiday gifts for all the snow lovers in your life!

NEXT ADVENTURE www.nextadventure.net

Next Adventure offers specials every day - sign up for their regular mailing list, as well as the special NWSCC list! The Portland store offers everything you could want in the way of sports equipment, with great prices! Stop at their Sandy store on your way to the mountain to rent equipment. Order online from their website - the selection is amazing!

Next Adventure is offering exclusive deals to NWSCC members!

Gold Level Industry Partner, Next Adventure, will be serving up some very special deals just for NWSCC members! Sign up [HERE](#) to join Next Adventure's NWSCC list to receive special deals throughout the year. Welcome Next Adventure! (Note that if you have a popup blocker you may not see the special box next to the NWSCC logo to sign up for these emails. You will need to disable the popup blocker or use a different browser to get the box.)

MT. HOOD MEADOWS www.skihood.com

Peak Days include Saturdays and Sundays through March 1, during which Value Passes are valid starting at 2 PM. Visit our [Value Pass FAQ](#)

[page](#) for complete details on our Peak Day schedule for the 2022-23 season.

A reminder: [we'll be open late on Monday, February 20](#) in honor of President's Day! Lifts are scheduled to operate from 9 AM to 9 PM. We'll also have [live music from Chris Couch](#) happening in Vertical from 2:30-5:30 PM, as well as [a special après ski menu](#) during the show! Get your lift tickets at the link below and come up to Meadows to end the long weekend with some night skiing/riding, live music, and great food! Purchase tickets [HERE](#).

We now have Three-Time Midweek Lift Tickets available for purchase on our website! These tickets cost \$199 and are good for three days of [open-to-close skiing and riding, Mondays through Fridays](#) (with the exception of MLK Day and Presidents Day) during the 2022-23 season. Please note that these tickets are specific to one person and are not transferrable. This is a great deal, especially on the days that we have night skiing and riding, offering hours and hours of fun. Join in on the good times and get your ticket at [THIS LINK!](#)

Vista Snowshoe Tours are starting (February 12, 17 & 26 and March 5, 12, 19, 24 & 26)! Hop on the Vista Express chairlift after it closes to the public and enjoy the serenity at 6,600 feet. Take in the views of White River Canyon and the Cascade Range as you hike along the southern boundary of the resort, down past Mitchell Creek, and back to the lodge for a delicious dinner in the Alpenstube prepared for you by our Culinary Services Team. This experience is priced at \$119 and includes the chairlift ride up Vista, guided hike, snowshoe and pole rentals, and dinner. There are a limited number of spots available in each tour, so make sure to [reserve yours](#) soon!

We know you're compiling a lot of epic footage this season at Meadows (we've seen it in some of those great reels and stories you've shared with us), so polish it up and get your edits ready for the return of the Virtual Film Fest! Similar to past seasons, we're looking for awesome videos 1-3 minutes in length that showcase Meadows through your lens. We even have prizes available for the top three edits and a Fan Favorite decided by you! Please head to [THIS LINK](#) for complete contest rules and deadlines before submitting. We can't wait to see what all you creative folks come up with this year!

Nighttime is the right time to learn how to ski or snowboard! Toyota Night Lessons at Meadows are a great way to get into winter sports, or to try a new one. These lessons are generally cheaper than our daytime offerings, and there are typically fewer people on the mountain during the evening. We also have [Three-Time Beginner Specials](#) too! Go [HERE](#) to book yours today (click on 5:00 pm start time to see pricing)!

Our [Illumination Snowshoe Tour](#) program has started! This evening two-hour guided tour features a roughly 3-mile loop that meanders through mature conifer forests, following the headwaters of the Hood River, with the iconic Umbrella Falls as one of the tour's highlights. After we finish the tour, we'll warm you back up with some hot chocolate! The tour starts at 5 PM and costs \$25 (you can add on rentals for \$15). Head to our Snowshoe Tour page [HERE](#) for complete details on this adventure, including what to bring, as well as to browse other tours!

Meadows will again be offering **Adult Midweek Ski Buses** this coming season from all over the Portland area and even Salem! Paul Sunderland spoke to NWSCC at our October Zoom meeting to tell us the good news! Contact Paul at skierps@comcast.net for details, as it's not yet on the Meadows website.

Our sister resort, Cooper Spur, is open weekends and Friday nights through the beginning of March (snow-dependent). Cooper Spur features beginner to intermediate terrain and is a great option for a family outing or getaway. Visit their website [HERE](#) for more information about all that Cooper Spur has to offer!

Did you know that in addition to offering daily service to Mt. Hood Meadows, [Columbia Area Transit's \(CAT\) Gorge-to-Mountain Express](#) bus also stops daily at Teacup Lake Sno-Park AND in Government Camp? That's right! You can buy a single fare for a one-time daytrip, or enjoy unlimited rides all season/year long on this and other CAT routes by purchasing a [Gorge Pass](#) for just \$40. See [this link](#) for bus timetables and route info.

February 17: [Vista Snowshoe Tour](#)
February 17: [Live Music - Shane Brown and the Sound](#)
February 18 & 19: [Live Music - Balance Trick](#)
February 20: [Live Music - Chris Couch](#)
February 24: [Live Music - Matthew McCravey](#)
February 25 & 26: [Live Music - Acoustic Minds](#)
February 26: [Vista Snowshoe Tour](#)
February 28 - March 2: [AAI Level 1 Avalanche Course \(Sold Out\)](#)
March 4: [Slide and Glide Nordic Race Series](#)
March 4: [Ski to Defeat ALS](#)
March 5: [Vista Snowshoe Tour](#)
March 12-13: [Oregon Cancer Ski Out](#)
March 25: [Spring Brew Fest](#)
April 1: [Full Sail Banked Slalom](#)
April 7 & 8: [Double Mountain Mazot Fest](#)
April 15: [Pride Day](#)
April 29: [Pond Skim](#)

MT. HOOD SKIBOWL www.skibowl.com

It's another great snowy winter on the mountain! Mt. Hood Skibowl's Snow Tube and Adventure Park, located at Skibowl East, is the only conveyor assisted tube hill on Mt. Hood, so no need to hike up the hill! We are open for Day Tubing Saturday, Sunday and holidays and for Cosmic Tubing® Friday, Saturday, Sunday and holidays. Advance reservations and tickets must be purchased online in advance. Spots fill up fast so make sure you plan ahead. Buy your tickets in advance at our website for [skiing](#) or [Day or Cosmic Tubing](#).

No need to head home at the end of your day. Our sister property, [Collins Lake Resort](#), is within walking distance from Mt. Hood Skibowl. The Resort offers 2, 3 and 4 bedroom condos, each furnished with its own custom charm and offers sleeping for six to ten guests comfortably. Choose between The Chalets, Grand Lodges or Golden Poles Chalets. During your stay you'll receive VIP rewards offering discounts on snowshoe, cross country ski, 20% off snowmobiles tours, and more!

SAVE EVEN MORE WITH THE GOLD VIP REWARDS CARD Stay at the Official Collins Lake Resort ® and receive your Gold VIP Card offering discounts at the Adventure Park, Mt. Hood Outfitters, Ratskeller Alpine Bar & Pizzeria, High Mountain Cafe plus much more!

There is so much fresh snow on the mountain and [Mt. Hood Outfitters](#) has everything you need to get you out! Known as the leading recreational outfitter guide service in the Mt. Hood National Forest they offer snowshoe and cross-country ski rentals and tours. They also hold the only permit to operate snowmobile

tours in the Mt. Hood National Forest. What better way to get out and scout the mountain than to take a scenic snowmobile ride through the forest covered trees on Mt. Hood.

Located in Central Oregon, just an hour east of Mt. Hood, is our sister property **Lake Simtustus Resort**. Surrounded by steep basalt canyon walls, Lake Simtustus Resort is situated on an 8 mile long lake reservoir and boasts over 300 days of sun, desert warmth and clear skies at night, making it one of the premier places to stargaze. The resort features custom Tiny Homes that were specifically designed for the Lake Simtustus landscape. Each home has gorgeous views, sleeps between 4 to 6 people, and are equipped with a full kitchen, spacious deck, private hot tub, outdoor BBQ and fire pit. In addition, our Crown Point units feature electric fireplaces and skylights for optimal stargazing. Lake Simtustus also offers 75 Full Hook Up RV sites, and on site boat launch, and 53 boat moorage slips for rent. All guests have access to showers, restrooms and laundry facilities. Pontoon boat, stand up paddle boards, kayaks, and golf cart rentals are available on site. We have it all and more! Check us out at <https://www.lakesimtustusresort.com/>

Right now, when you book two nights you'll get the third night FREE! or book one night and receive 50% off your second night!

Add our Romance Package for \$100 when booking to receive your choice of La Belle Noir's Pinto Noir, Sparkling or White Albarino, a box of delicate chocolate truffles and two Hydroflask tumblers!

Offer is valid on new reservations now through 3.31.23

Use promo code "GETAWAY" to book one night and get 50% off second night.

Use promo code "LAKELIFE" to book two nights and get third night FREE!

A promotion is being offered by Wild Mike's Pizza - buy a specially marked box and receive \$10 off night skiing at Mt. Hood Skibowl on Wednesday nights!



TIMBERLINE www.timberlinelodge.com

FAMILY-FRIENDLY FUN AT SUMMIT PASS:

The best place for beginner skiers and snowboarders on Mt. Hood is at Timberline's [Summit Pass](#). Learning is easy and fun on Heidi's Conveyor. Our expanded rentals building is stocked with the gear you need to have a blast on Summit's gentle slope. Other cold weather gear is available for purchase inside Summit lodge. At break time, refuel with a hearty lunch, cool down with a Mt. Hood Brewing Co. beer, or warm up with hot cocoa. Its affordability and easy access off Highway 26 make

Summit an accessible option for snowplay, including tubing! Summit Pass is open daily, 9am - 4pm, conditions permitting.

MOONLIGHT SNOWSHOE HOTEL PACKAGES:

By popular demand, we have added several more moonlight snowshoe hotel package dates! Includes a room for two, snowshoes, and the guided snowshoe walk. March 8th & 29th, April 5th, 6th & 7th - book [HERE](#).

NIGHT SKI & CHILL:

Come for night skiing, stay for dinner at the Y'Bar! A newly expanded Y'Bar menu launched last weekend to rave reviews. Night skiing at Timberline is scheduled to operate 4pm - 9pm Fridays & Saturdays plus Sunday the 19th through February 26. See new Y'Bar menu [HERE](#).

BOOK A LESSON: Kids Club is back at Timberline! All group and Kids Club lessons will available weekends and holidays, December 17 – April 9, snow permitting. Private lessons at Timberline are available by request. Group lessons at Summit Pass are perfect for beginners. [Explore lesson types](#).

EXPLORE MT. HOOD: Make Timberline your home base for your Mt. Hood adventure. From the hiking trails you can access right from the lodge, the views are unparalleled. Visit nearby lakes, rivers, and waterfalls, or mountain bike in our bike park. Or simply relax in the historic lodge.

LODGING: Stay in the historic Timberline Lodge, or in our CONDOS IN GOVERNMENT CAMP: Staying at Timberline's luxury condominiums—The Lodge At Government Camp—makes for a fun and unique mountain town experience for your next family vacation. Discover our [condos](#). Special lodging packages at Timberline Lodge can be found [HERE](#), including our ski package for two! And don't forget, season passholders get 25% off midweek hotel rooms through May 29th!

DINING AT TIMBERLINE: Timberline Lodge and Mt. Hood Brewing Co. are open. Thank you for dining with us! [Explore our restaurants](#). Note that holiday dinners are only available for hotel guests only.

WORK AT TIMBERLINE: Get hired and get a free season pass, health benefits, paid time off, and more! Join Team Timberline! Get details [HERE](#).

KANDAHAR LODGE, Whitefish, MT www.kandaharlodge.com

See [specials](#) on NWSCC website for 15% off!

INDUSTRY MEMBERS

NWSCC would like to thank our Industry Members for their generous support. Without their help, it would be impossible for NWSCC to accomplish our goals of supporting ski clubs and the ski industry. Please visit these businesses that support NWSCC.

NWSCC is always accepting memberships at all levels. If you are interested, or know a business that is, please contact IndustryMember@nwski.org.

GOLD MEMBERS

Mt. Bachelor - <https://www.mtbachelor.com/>



Next Adventure - <https://www.nextadventure.net/>
Check out ALL their stores:

Grand Avenue Outdoor Store, 426 SE Grand Avenue, Portland, OR
Portland Paddle Sports Center, 624 SE 7th Avenue, Portland, OR
Scappoose Bay Paddling Center, 57420 Old Portland Road, Warren, OR
and their NEW store at 38454 Pioneer Boulevard, Sandy, OR



NEXT ADVENTURE

Inform · Outfit · Excite

Mt. Hood Meadows - <https://www.skihood.com/>



**MT. HOOD
MEADOWS**

Your mountain home

BRONZE MEMBERS

Indy Pass - Ski 2 days at 120+ independent ski resorts
Kandahar Lodge at Whitefish Mountain Resort
Mt. Hood Skibowl, Government Camp, OR
Timberline, Mt. Hood, OR

SUPPORTING MEMBERS

Cooper Spur Mountain Resort, Mt. Hood, Oregon

WHAT DO YOU THINK OF OUR NEWSLETTER?

Would you be willing to write an article about something important to your club?

Contact editor@nwskiers.org with your comments and ideas.

FOLLOW US

Forward to a friend.

[View this email in your browser](#)

You are receiving this email because of your relationship with Northwest Ski Club Council. Please [reconfirm](#) your interest in receiving emails from us. If you do not wish to receive any more emails, you can [unsubscribe here](#).

This message was sent to mcgavinski@gmail.com by contact@nwski.org
5331 SW Macadam Ave., Suite 258; Box 438, Portland, OR, 97239

 [Unsubscribe](#) | [Manage Subscription](#) | [Forward Email](#) | [Report Abuse](#)

